



US Army Corps of Engineers
BUILDING STRONG®

Hurricane Ida Advisory #15

For Planning Purposes Only!

WASHINGTON, DC
18:26:53
29 Aug 2021

CHICAGO
17:26:53
29 Aug 2021

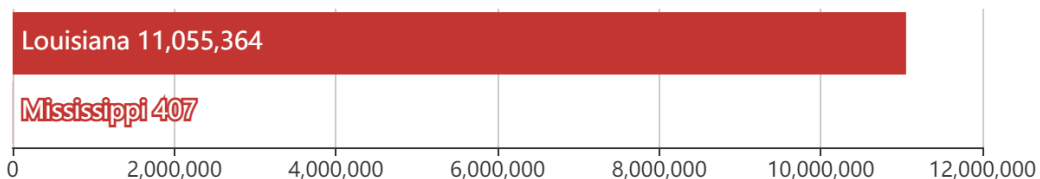
LOS ANGELES
15:26:53
29 Aug 2021

<https://go.usa.gov/xFSwA>

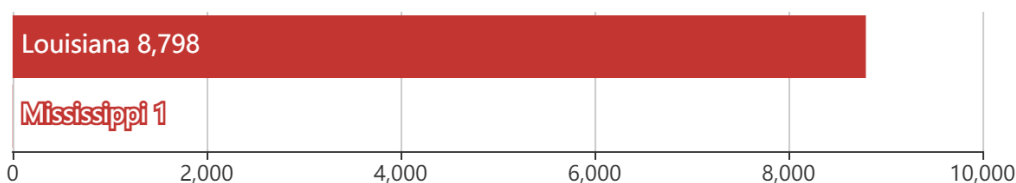
Updated as of 29 Aug 2021 (5:26 PM Central Daylight Time)

Debris

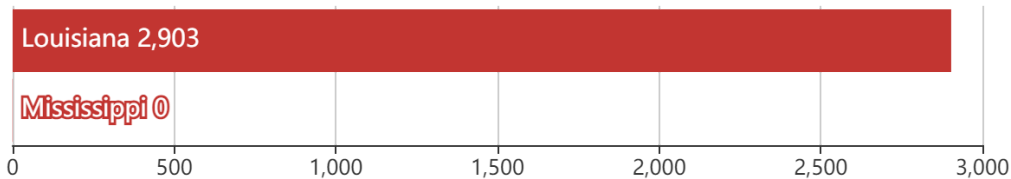
11.1M
cu. yd.



Est. Temp. Roofing
8.8K
units

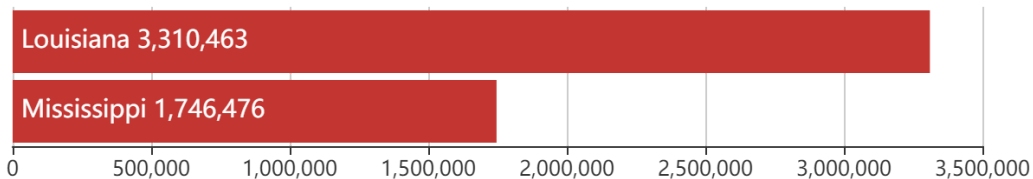


Act. Temp. Roofing
2.9K
units



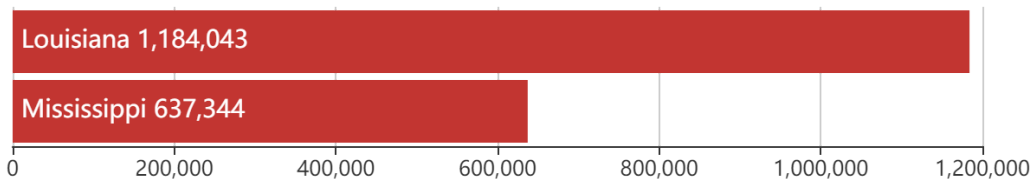
Population

5.1M
people



Households

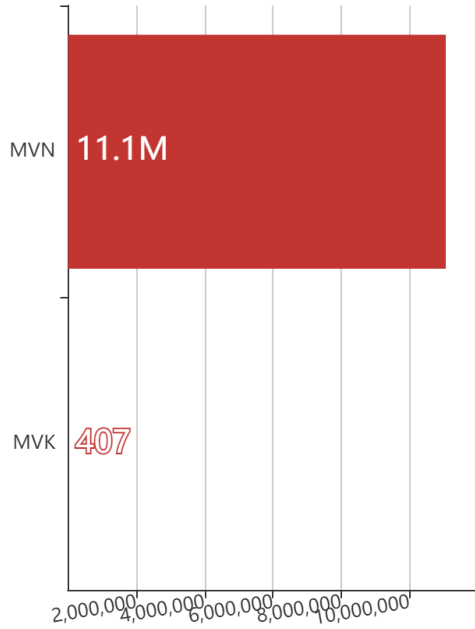
1.8M
households



Mission Model Summary

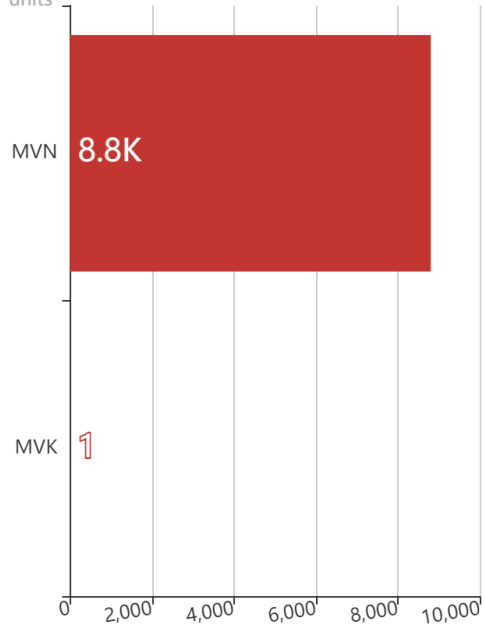
Debris By USACE District

cu. yd.

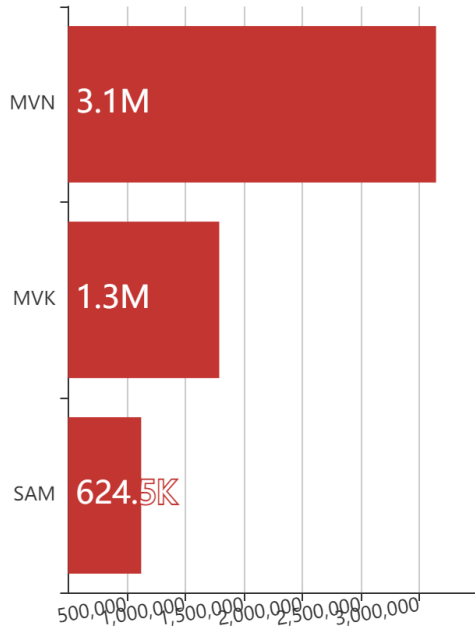


Est. Temp. Roofing By USACE District

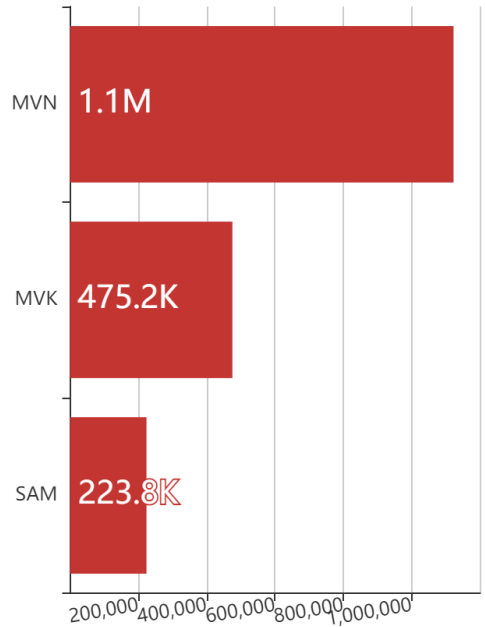
units



Population By USACE District



Households By USACE District



Critical Infrastructure Summary

Total

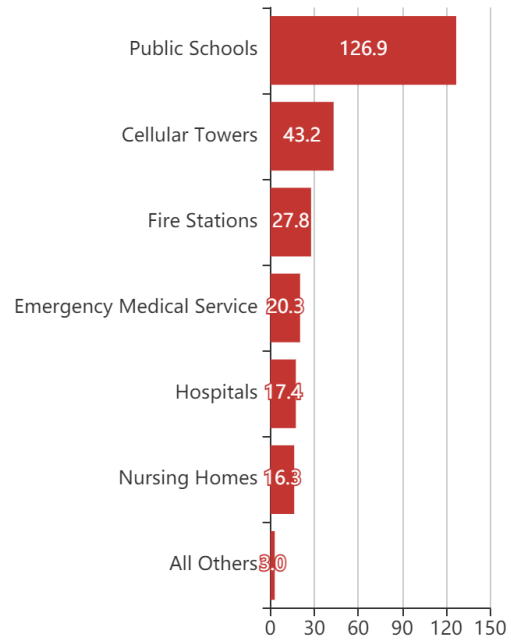


Power Requirements



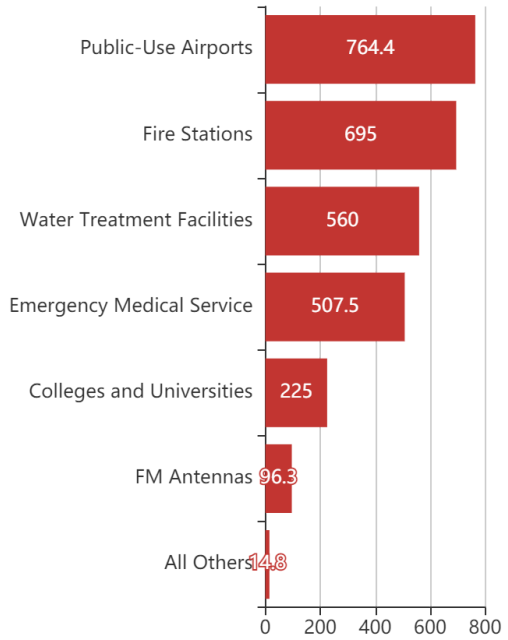
Generators

By Generator Count



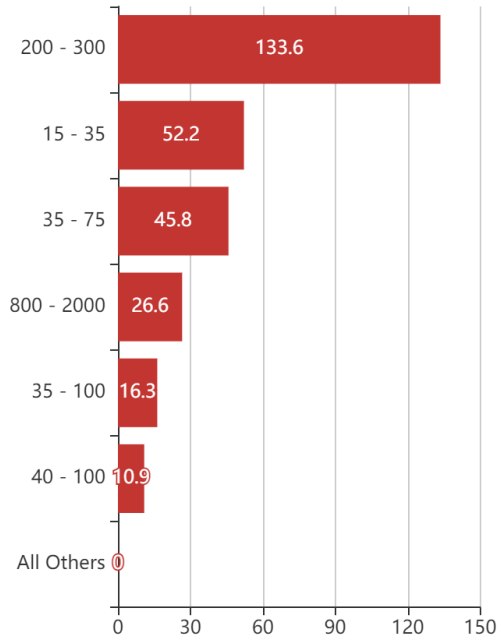
Generators

By Power Requirement



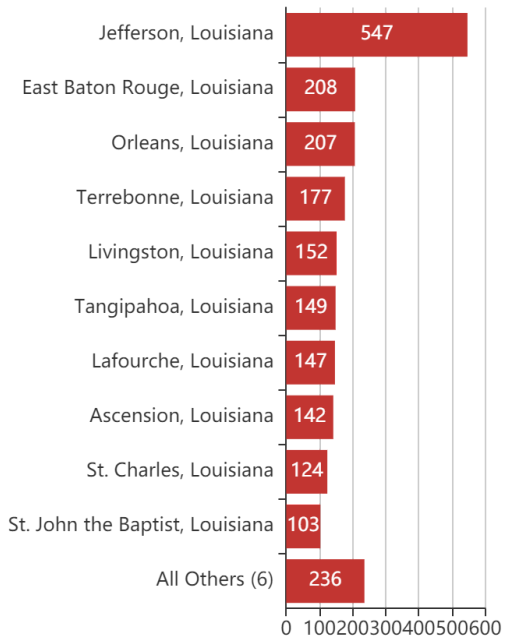
Generators

By Range



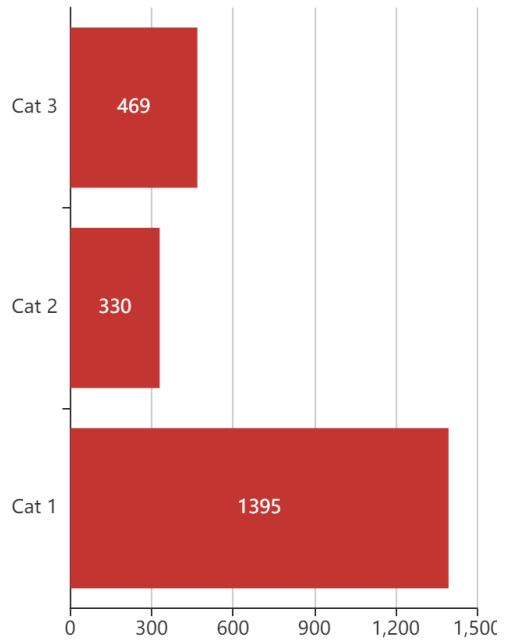
Structures

By County



Structures

By Intensity





Key Messages for Hurricane Ida

Advisory 15: 4:00 PM CDT Sun Aug 29, 2021

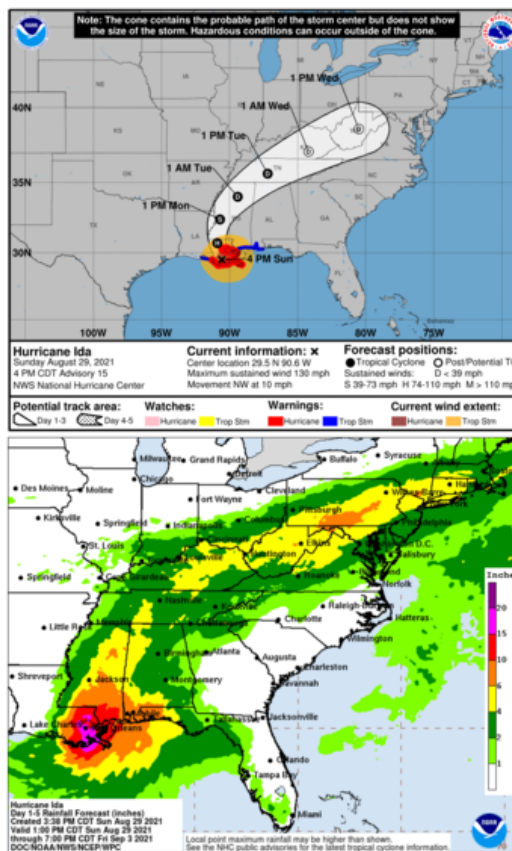


1. Extremely life-threatening storm surge inundation of 9 feet or greater above ground level will continue through early this evening along portions of the coast between Burns Point, Louisiana, to Ocean Springs, Mississippi. Overtopping of local levees outside of the Hurricane and Storm Damage Risk Reduction System is possible where local inundation values may be higher.

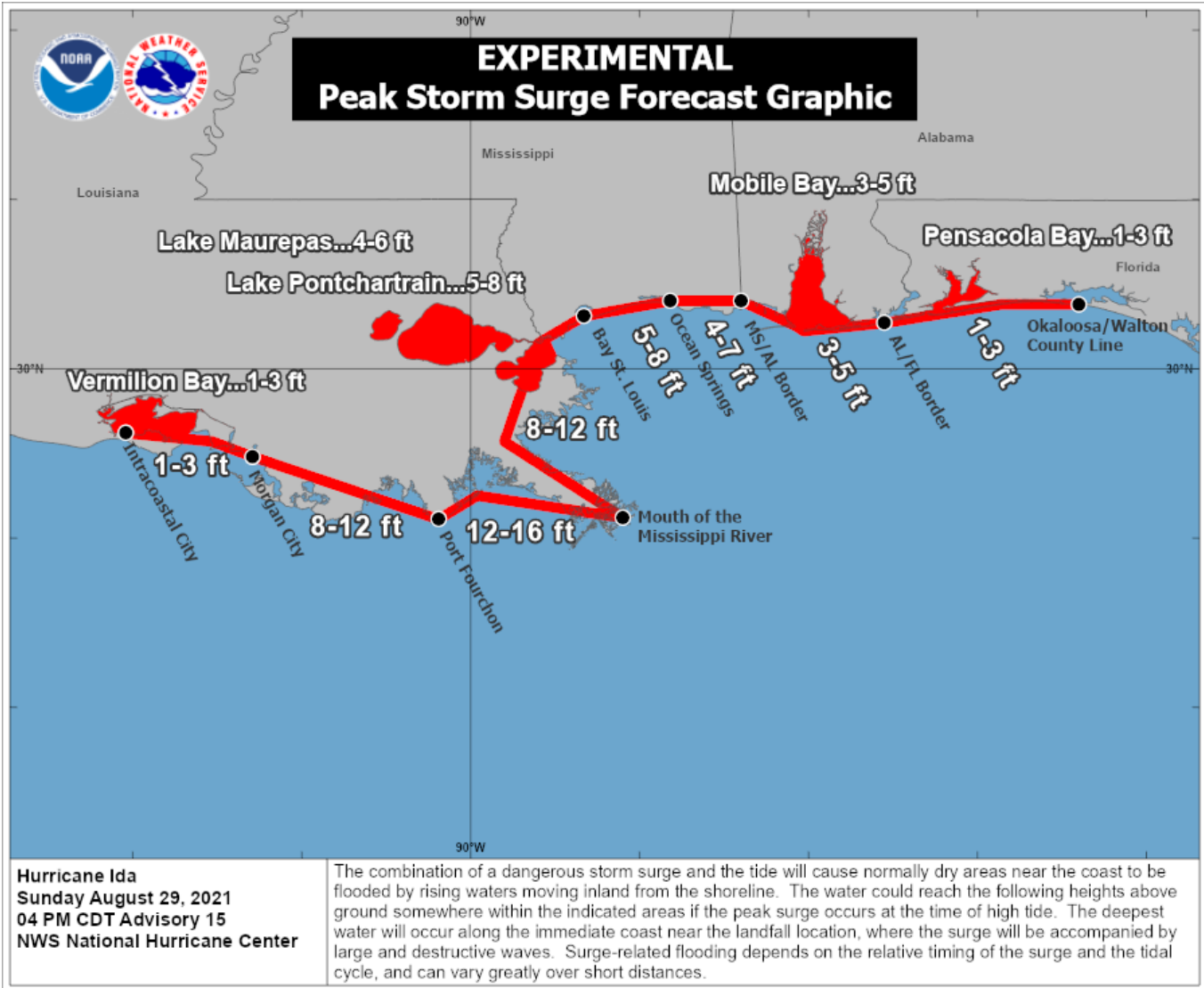
2. Catastrophic wind damage will occur near the core of Ida as it moves inland over southeastern Louisiana during the next few hours. Hurricane-force winds and damaging wind gusts are expected through tonight within the Hurricane Warning area in southeastern Louisiana, including metropolitan New Orleans.

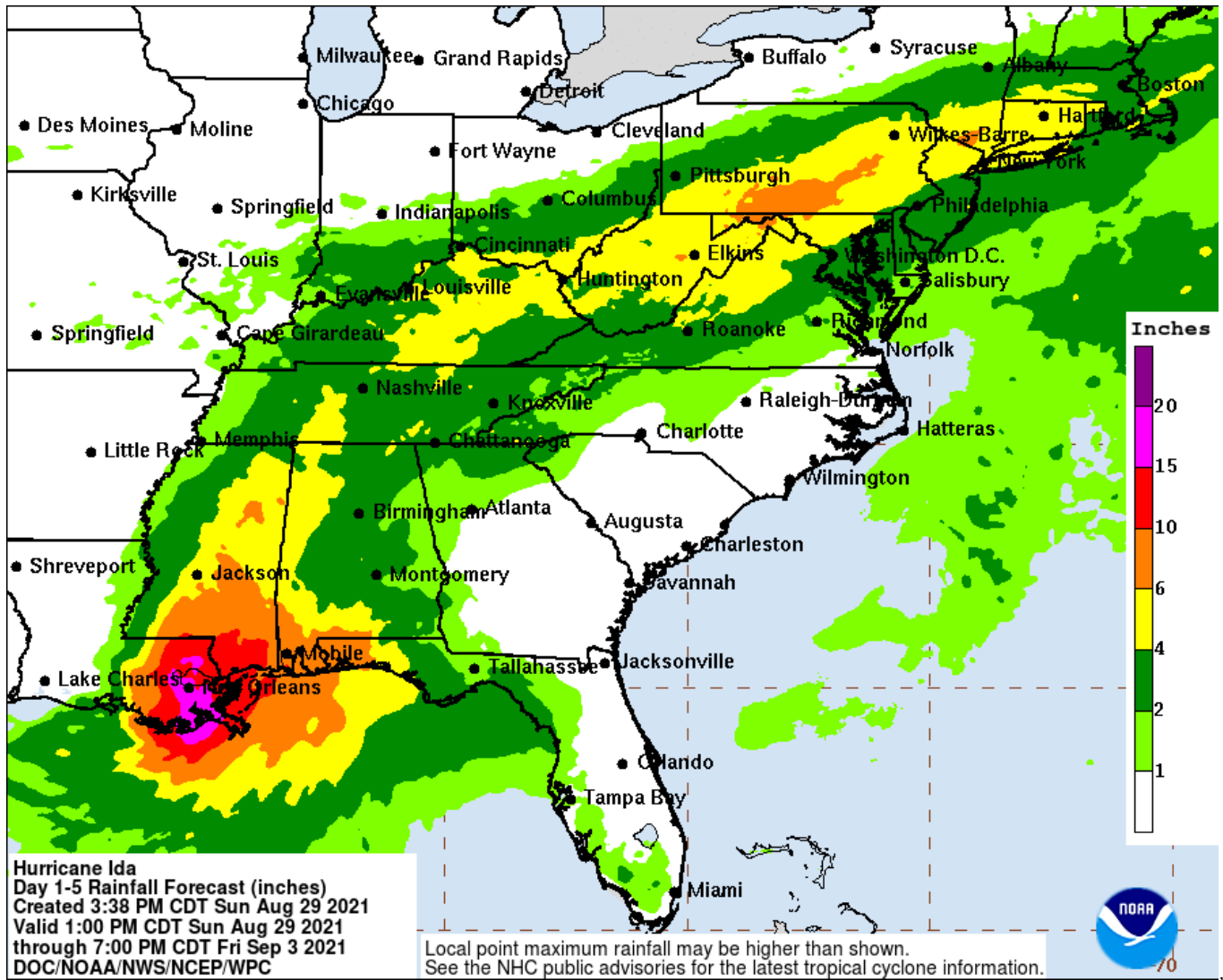
3. Damaging winds, especially in gusts, will spread inland near the track of the center of Ida into southwestern Mississippi tonight and early Monday. These winds will likely lead to widespread tree damage and power outages.

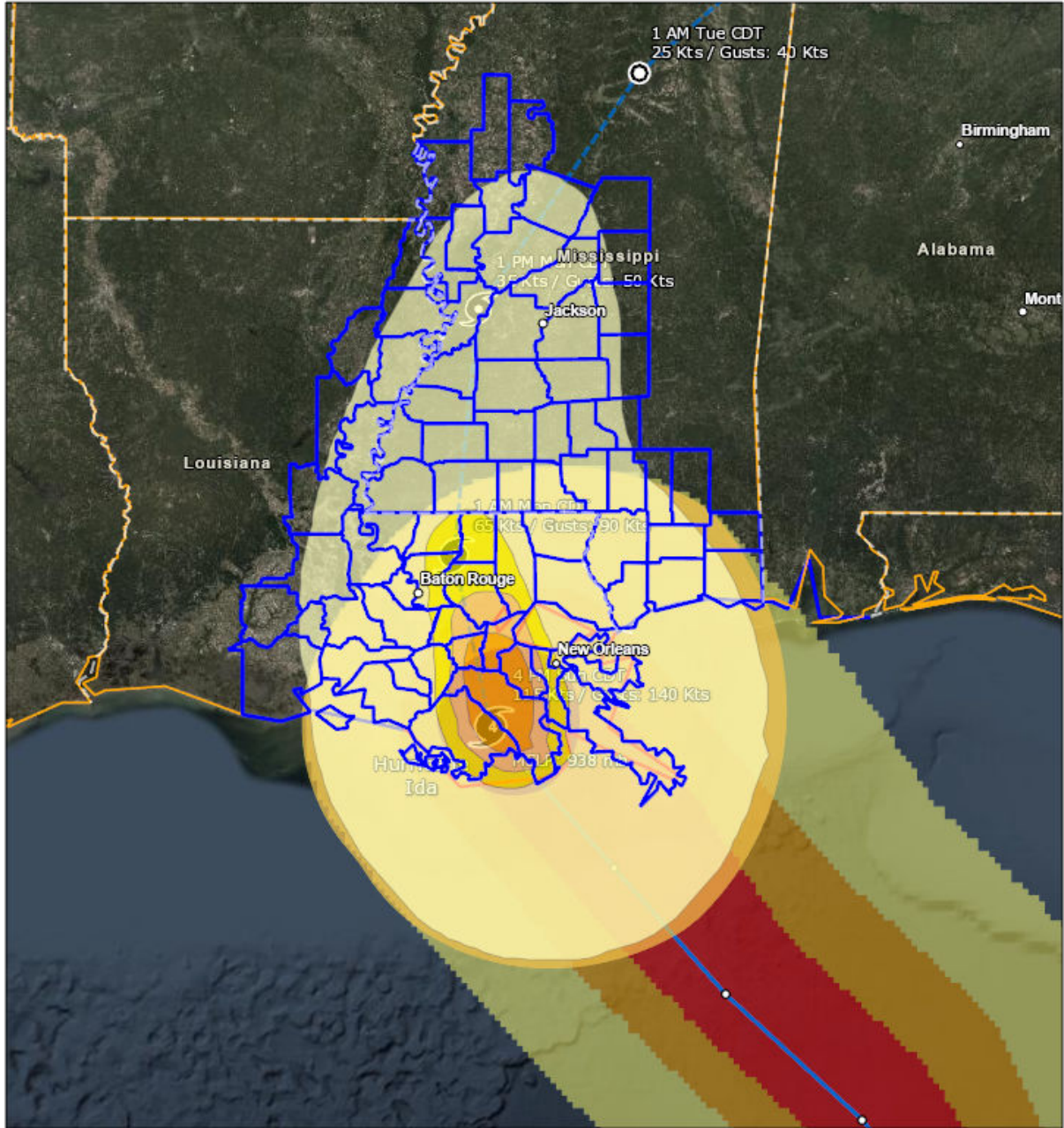
4. Ida will continue to produce heavy rainfall through Monday across the central Gulf Coast across southeast Louisiana, coastal Mississippi, and southwestern Alabama, resulting in considerable to life-threatening flash and urban flooding and significant river flooding impacts. As Ida moves inland, significant flooding impacts are possible across portions of the Lower Mississippi Valley, Tennessee Valley, Upper Ohio Valley, Central Appalachians, and Mid-Atlantic through Wednesday.



For more information go to hurricanes.gov

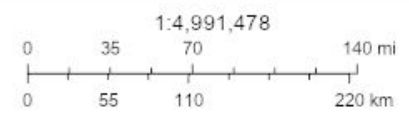






- Counties
- State Boundaries
- Mission Model Swaths
- TS
- Cat 1
- Cat 2
- Cat 3

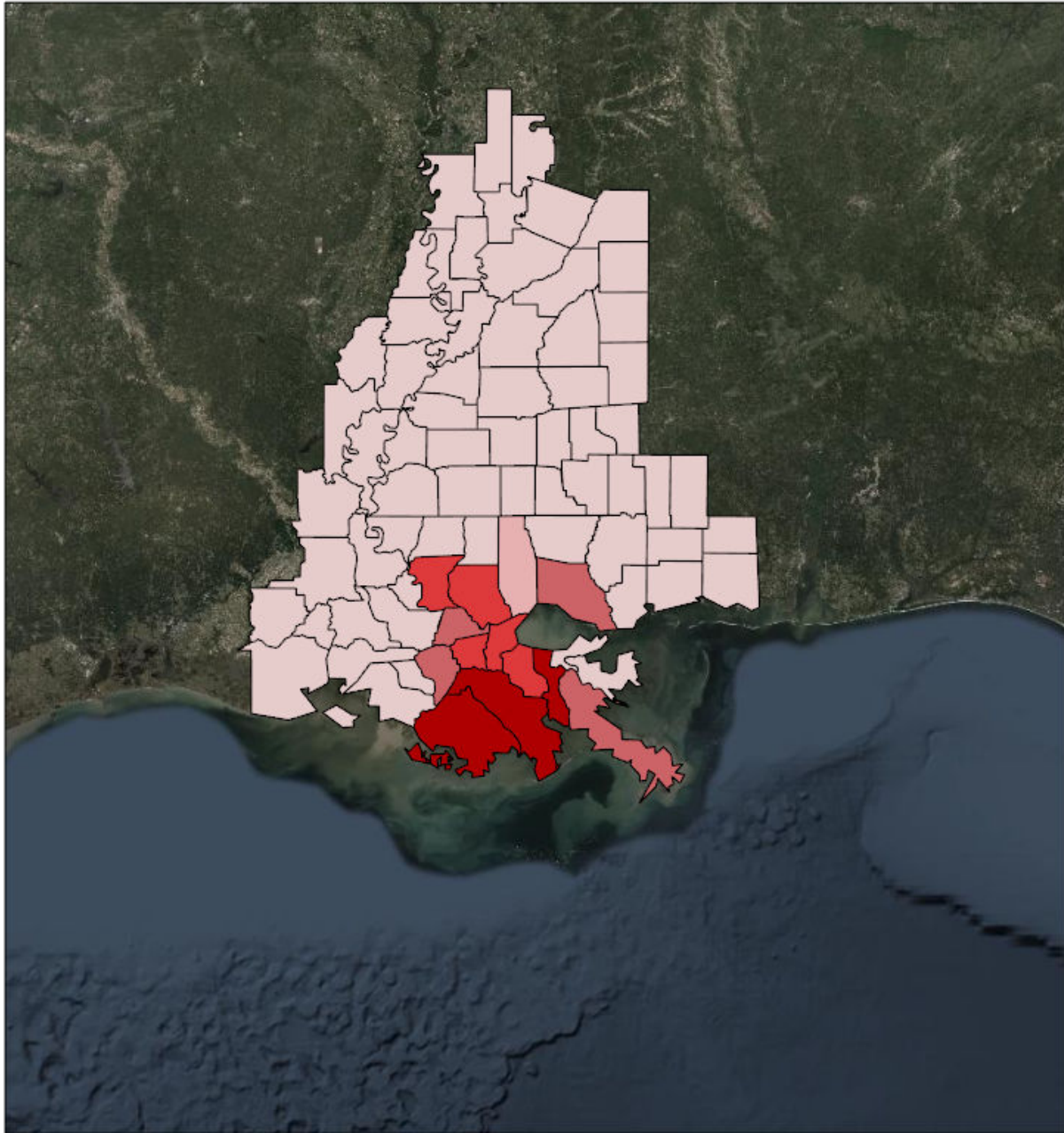
- Tropical Cyclone Observed Surface Wind Swath
- Observed (Best Track) Winds \geq 34 knots (39 mph)
 - Observed (Best Track) Winds \geq 50 knots (58 mph)
 - Observed (Best Track) Winds \geq 64 knots (74 mph)
 - Observed (Best Track) Track Line
 - Observed (Best Track) Center Position







Source: NOAA, Esri, NOAA/NOS/OCS nowCOAST, NOAA/NWS/NHC, NOAA/NWS/CPHC, Esri, HERE, Garmin, FAO, NOAA, USGS, EPA, Source: Esri, DigitalGlobe, GeoEye, Earthstar Geographics, CNES/Airbus DS, USDA, USGS, AeroGRID, IGN, and the GIS User Community

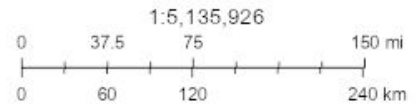
Created by SimSuite

Debris



Debris

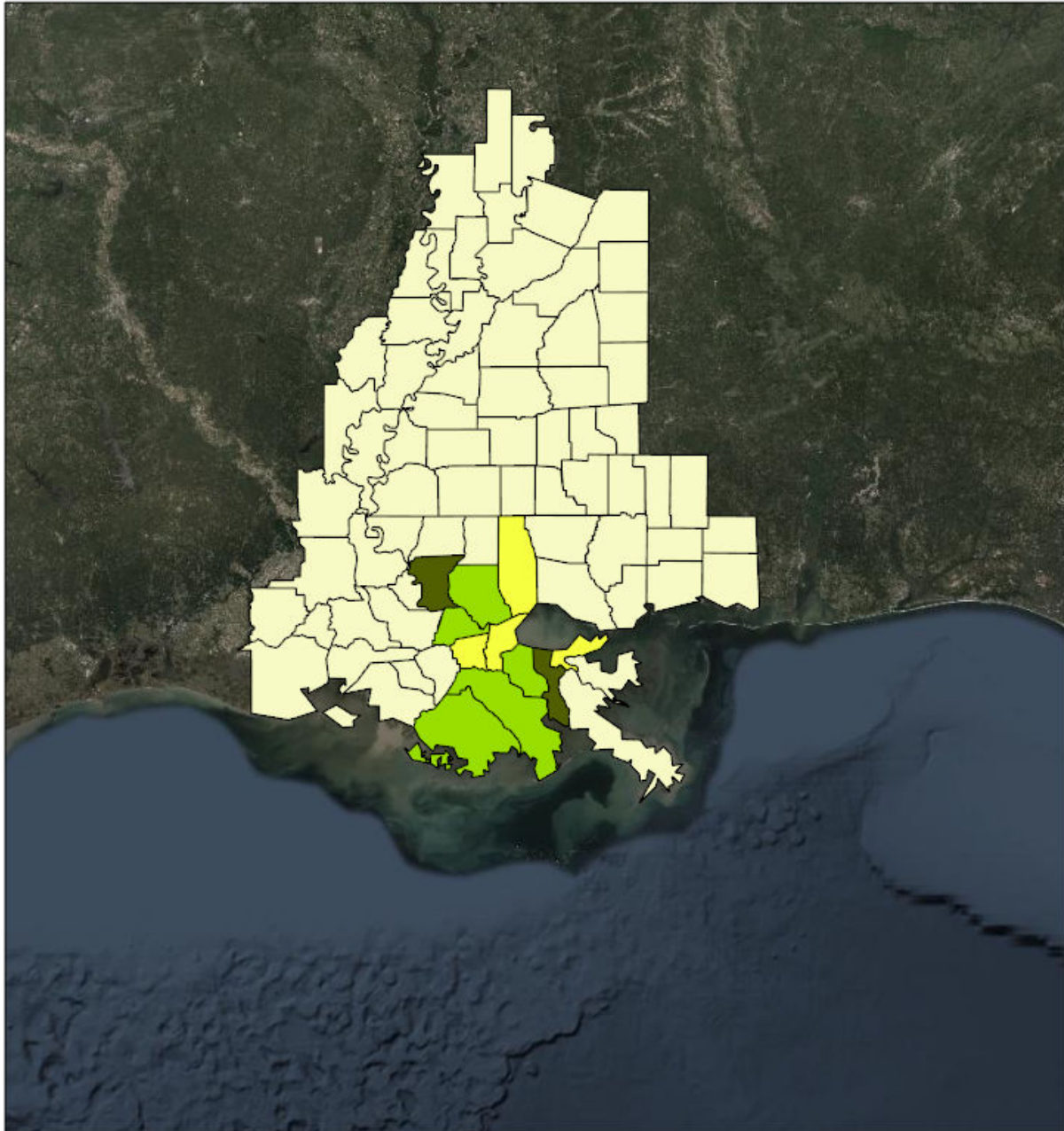
-  < 100,000 cubic yards
-  100,000 - 249,000 cubic yards
-  250,000 - 499,999 cubic yards
-  500,000 - 999,999 cubic yards



Source: Esri, DigitalGlobe, GeoEye, Earthstar Geographics, CNES/Airbus DS, USDA, USGS, AeroGRID, IGN, and the GIS User Community

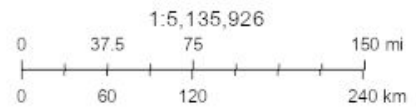
Created by SimSuite

Est. Temp. Roofing



Est. Temp. Roofing

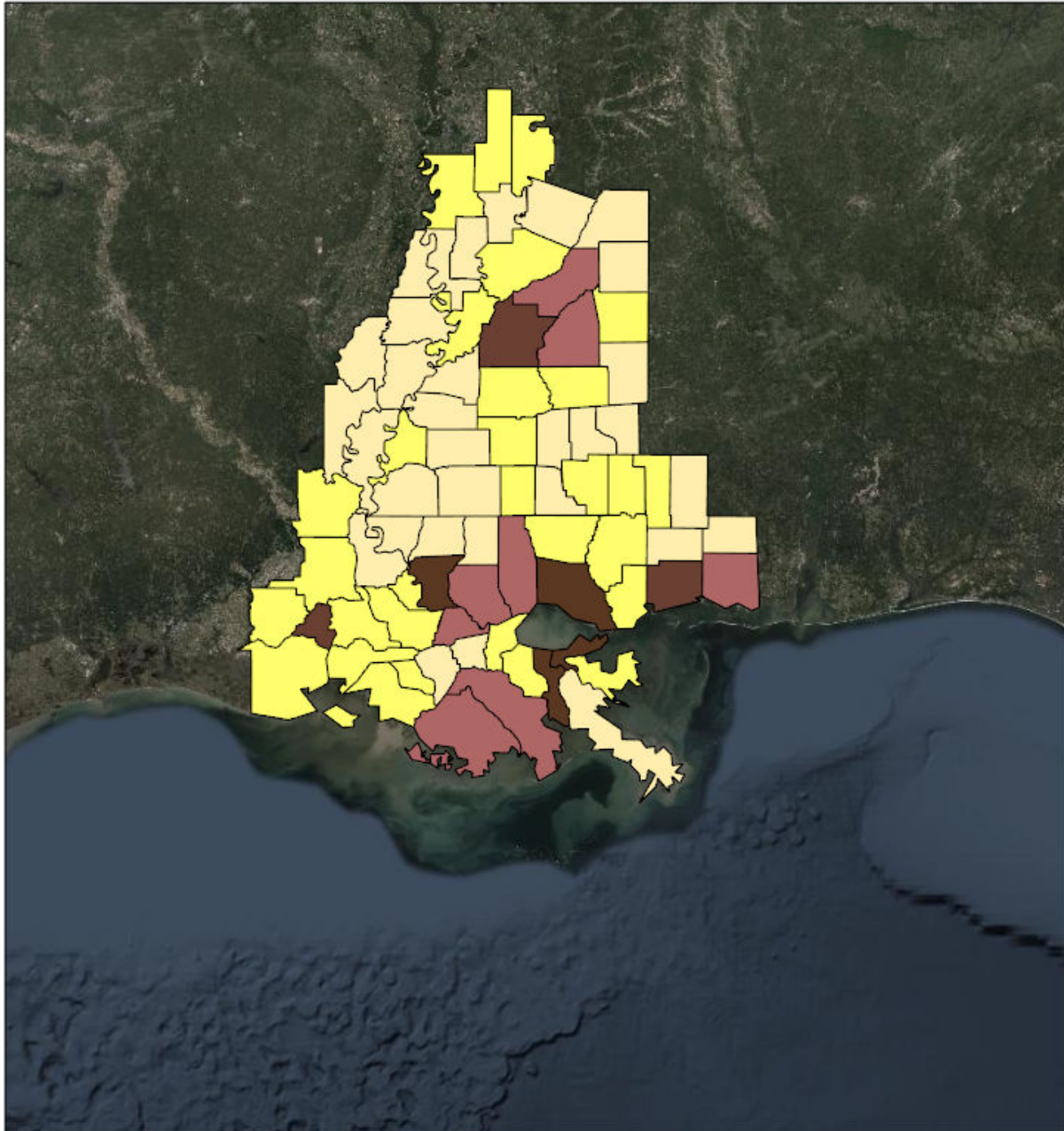
- < 100 units
- 100 - 499 units
- 500 - 999 units



Source: Esri, DigitalGlobe, GeoEye, Earthstar Geographics, CNES/Airbus DS, USDA, USGS, AeroGRID, IGN, and the GIS User Community

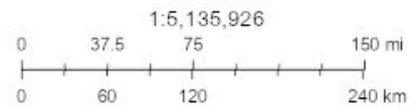
Created by SimSuite

Population



Population

- < 25,000 persons
- 25,000 - 99,000 persons
- 100,000 - 174,999 persons
- 175,000 - 249,000 persons



Source: Esri, DigitalGlobe, GeoEye, Earthstar Geographics, CNES/Airbus DS, USDA, USGS, AeroGRID, IGN, and the GIS User Community

Created by SimSuite

Households



Mission Summary



The mission models account for storm surge and wind damage only, but do not account for other related storm hazards that may affect the mission estimates.

| Mission Summary | |
|--------------------------------|------------|
| Total Counties | 76 |
| Debris (cu. yd.) | 11,055,771 |
| Est. Temp. Roofing (units) | 8,799 |
| Act. Temp. Roofing (units) | 2,904 |
| Population | 5,056,939 |
| Households | 1,821,387 |
| Population Distribution | |
| Tropical Storm | 2,862,355 |
| Category 1 | 1,114,060 |
| Category 2 | 328,562 |
| Category 3 | 165,986 |

| LOUISIANA | Yds of Debris (11,055,364) | Est. Roof Units (8,798) | Act. Roof Units (2,903) | Population (3,310,463) | Households (1,184,043) |
|----------------------|---------------------------------------|------------------------------------|------------------------------------|-----------------------------------|-----------------------------------|
| Acadia | 0 | 0 | 0 | 64,233 | 22,841 |
| Ascension | 455,813 | 624 | 206 | 124,274 | 37,790 |
| Assumption | 301,182 | 52 | 17 | 24,326 | 8,736 |
| Avoyelles | 0 | 0 | 0 | 43,493 | 15,432 |
| Catahoula | 0 | 0 | 0 | 10,384 | 3,834 |
| Concordia | 0 | 0 | 0 | 20,789 | 7,613 |
| East Baton Rouge | 872,329 | 1,789 | 590 | 455,183 | 172,057 |
| East Carroll | 0 | 0 | 0 | 7,690 | 2,552 |
| East Feliciana | 35,602 | 73 | 24 | 20,133 | 7,022 |
| Franklin | 0 | 0 | 0 | 21,409 | 7,904 |
| Iberia | 0 | 0 | 0 | 74,654 | 26,778 |
| Iberville | 2,274 | 5 | 2 | 34,675 | 11,072 |
| Jefferson | 1,438,409 | 2,263 | 747 | 436,044 | 169,647 |
| Lafayette | 0 | 0 | 0 | 249,487 | 87,027 |
| Lafourche | 1,627,458 | 941 | 310 | 102,036 | 35,486 |
| Livingston | 528,406 | 746 | 246 | 142,761 | 46,007 |
| Madison | 0 | 0 | 0 | 11,737 | 4,025 |
| Orleans | 87,700 | 180 | 59 | 378,952 | 142,158 |
| Plaquemines | 294,843 | 4 | 1 | 24,106 | 8,077 |
| Pointe Coupee | 0 | 0 | 0 | 22,931 | 9,082 |
| St. Bernard | 0 | 0 | 0 | 42,016 | 13,221 |
| St. Charles | 941,325 | 536 | 177 | 55,762 | 18,557 |
| St. Helena | 61,511 | 45 | 15 | 11,008 | 4,333 |
| St. James | 621,308 | 202 | 67 | 22,785 | 7,717 |
| St. John the Baptist | 762,808 | 450 | 149 | 46,127 | 15,965 |
| St. Landry | 0 | 0 | 0 | 85,834 | 31,857 |
| St. Martin | 0 | 0 | 0 | 55,795 | 19,216 |
| St. Mary | 0 | 0 | 0 | 54,463 | 20,457 |
| St. Tammany | 354,985 | 0 | 0 | 259,212 | 87,521 |
| Tangipahoa | 167,265 | 284 | 94 | 133,414 | 45,135 |
| Tensas | 0 | 0 | 0 | 5,076 | 2,172 |
| Terrebonne | 2,502,147 | 604 | 199 | 116,998 | 40,091 |
| Vermilion | 0 | 0 | 0 | 61,784 | 21,889 |
| Washington | 0 | 0 | 0 | 48,152 | 18,113 |
| West Baton Rouge | 0 | 0 | 0 | 26,881 | 8,688 |
| West Feliciana | 0 | 0 | 0 | 15,859 | 3,971 |

| MISSISSIPPI | Yds of Debris (407) | Est. Roof Units (1) | Act. Roof Units (0) | Population (1,746,476) | Households (637,344) |
|--------------------|----------------------------|----------------------------|----------------------------|-------------------------------|-----------------------------|
| Adams | 0 | 0 | 0 | 31,160 | 12,643 |
| Amite | 407 | 1 | 0 | 12,545 | 5,351 |
| Attala | 0 | 0 | 0 | 19,396 | 7,619 |
| Claiborne | 0 | 0 | 0 | 9,331 | 3,440 |
| Copiah | 0 | 0 | 0 | 29,484 | 10,708 |
| Covington | 0 | 0 | 0 | 20,137 | 7,430 |
| Forrest | 0 | 0 | 0 | 75,662 | 28,746 |
| Franklin | 0 | 0 | 0 | 8,081 | 3,211 |
| George | 0 | 0 | 0 | 23,759 | 7,982 |
| Hancock | 0 | 0 | 0 | 48,810 | 17,380 |
| Harrison | 0 | 0 | 0 | 205,027 | 71,476 |
| Hinds | 0 | 0 | 0 | 243,165 | 91,351 |
| Holmes | 0 | 0 | 0 | 18,437 | 6,926 |
| Humphreys | 0 | 0 | 0 | 8,556 | 3,373 |
| Issaquena | 0 | 0 | 0 | 1,325 | 472 |
| Jackson | 0 | 0 | 0 | 144,768 | 52,205 |
| Jefferson | 0 | 0 | 0 | 7,644 | 2,929 |
| Jefferson Davis | 0 | 0 | 0 | 11,776 | 4,977 |
| Lamar | 0 | 0 | 0 | 58,929 | 21,542 |
| Lawrence | 0 | 0 | 0 | 13,333 | 5,078 |
| Leake | 0 | 0 | 0 | 22,438 | 8,272 |
| Leflore | 0 | 0 | 0 | 31,148 | 11,577 |
| Lincoln | 0 | 0 | 0 | 35,319 | 13,296 |
| Madison | 0 | 0 | 0 | 107,968 | 35,829 |
| Marion | 0 | 0 | 0 | 26,158 | 10,135 |
| Pearl River | 0 | 0 | 0 | 56,827 | 20,816 |
| Perry | 0 | 0 | 0 | 12,551 | 4,674 |
| Pike | 0 | 0 | 0 | 40,438 | 15,370 |
| Rankin | 0 | 0 | 0 | 150,867 | 52,836 |
| Scott | 0 | 0 | 0 | 29,480 | 10,248 |
| Sharkey | 0 | 0 | 0 | 4,786 | 1,834 |
| Simpson | 0 | 0 | 0 | 27,769 | 10,330 |
| Smith | 0 | 0 | 0 | 16,696 | 6,221 |
| Stone | 0 | 0 | 0 | 18,163 | 6,165 |
| Sunflower | 0 | 0 | 0 | 26,622 | 8,822 |
| Walthall | 0 | 0 | 0 | 14,801 | 5,888 |
| Warren | 0 | 0 | 0 | 48,277 | 18,941 |
| Washington | 0 | 0 | 0 | 48,082 | 18,936 |
| Wilkinson | 0 | 0 | 0 | 9,239 | 3,455 |
| Yazoo | 0 | 0 | 0 | 27,522 | 8,860 |

Critical Infrastructure

| Summary | | | |
|--|---------------|------------|----------|
| Total Critical Facilities | | 2,194 | |
| Power Requirements (kW) | | 78,582.9 | |
| Range (kW) | | | |
| Communications | # FED Gen Req | Range (kW) | Req kW |
| AM Antennas (15) | 0.8 | 35 - 75 | 41.3 |
| Cellular Towers (72) | 43.2 | 35 - 75 | 2,376.0 |
| FM Antennas (35) | 1.8 | 35 - 75 | 96.3 |
| Education | # FED Gen Req | Range (kW) | Req kW |
| Private Schools (155) | 0.0 | 200 - 300 | 0.0 |
| Public Schools (423) | 126.9 | 200 - 300 | 31,725.0 |
| Colleges and Universities (45) | 0.9 | 200 - 300 | 225.0 |
| Emergency Services | # FED Gen Req | Range (kW) | Req kW |
| 911 Call Centers (1) | 0.1 | 15 - 35 | 2.5 |
| Emergency Medical Service (203) | 20.3 | 15 - 35 | 507.5 |
| Fire Stations (278) | 27.8 | 15 - 35 | 695.0 |
| Service Providers (1) | 0.0 | 0 - 0 | 0.0 |
| Healthcare | # FED Gen Req | Range (kW) | Req kW |
| Nursing Homes (109) | 16.3 | 35 - 100 | 1,103.6 |
| Hospitals (58) | 17.4 | 800 - 2000 | 24,360.0 |
| Urgent Care Facilities (29) | 5.8 | 200 - 300 | 1,450.0 |
| Military | # FED Gen Req | Range (kW) | Req kW |
| Air National Guard (ANG) Sites (2) | 0.0 | 15 - 35 | 0.0 |
| Army National Guard (ARNG) Sites (13) | 0.0 | 15 - 35 | 0.0 |
| National Security Government Military Facilities (116) | 0.0 | 15 - 35 | 0.0 |
| Law Enforcement | # FED Gen Req | Range (kW) | Req kW |
| Prison Points (21) | 4.2 | 400 - 600 | 2,100.0 |
| Local Police (37) | 3.7 | 15 - 35 | 92.5 |
| State Police (5) | 0.3 | 15 - 35 | 6.3 |
| Correctional Facilities (0) | 0.0 | 400 - 600 | 0.0 |
| State and Local EOC | # FED Gen Req | Range (kW) | Req kW |
| Local Emergency Operations Centers (15) | 3.0 | 15 - 40 | 82.5 |
| State Emergency Operation Centers (EOCs) (0) | 0.0 | 15 - 35 | 0.0 |

| State Facilities | # FED Gen Req | Range (kW) | Req kW |
|-------------------------------------|----------------------|-------------------|---------------|
| Governors Mansion (0) | 0.0 | 100 - 200 | 0.0 |
| Major State Government Building (5) | 0.5 | 100 - 200 | 75.0 |

| Transportation | # FED Gen Req | Range (kW) | Req kW |
|-------------------------------------|----------------------|-------------------|---------------|
| Ports (364) | 0.0 | 600 - 1200 | 0.0 |
| Amtrak Stations (3) | 0.0 | 100 - 300 | 0.0 |
| Bus Stations (49) | 0.0 | 100 - 300 | 0.0 |
| Intermodal Terminal Facilities (23) | 0.0 | 100 - 300 | 0.0 |
| Railroad Stations (3) | 0.0 | 100 - 300 | 0.0 |
| Public-Use Airports (91) | 10.9 | 40 - 100 | 764.4 |

| Water | # FED Gen Req | Range (kW) | Req kW |
|----------------------------------|----------------------|-------------------|---------------|
| Water Treatment Facilities (1) | 0.4 | 800 - 2000 | 560.0 |
| Wastewater Treatment Plants (22) | 8.8 | 800 - 2000 | 12,320.0 |

COVID-19

| # | County | Cases |
|----|----------------------|--------|
| 1 | Jefferson | 65,340 |
| 2 | East Baton Rouge | 58,416 |
| 3 | Orleans | 43,361 |
| 4 | St. Tammany | 39,777 |
| 5 | Lafayette | 34,858 |
| 6 | Harrison | 28,793 |
| 7 | Hinds | 28,436 |
| 8 | Livingston | 22,291 |
| 9 | Tangipahoa | 20,978 |
| 10 | Jackson | 20,795 |
| 11 | Ascension | 19,952 |
| 12 | Rankin | 19,385 |
| 13 | Terrebonne | 17,784 |
| 14 | Lafourche | 16,391 |
| 15 | Madison | 12,941 |
| 16 | St. Landry | 12,418 |
| 17 | Forrest | 11,911 |
| 18 | Iberia | 11,197 |
| 19 | Acadia | 9,346 |
| 20 | Lamar | 9,311 |
| 21 | Vermilion | 8,883 |
| 22 | St. Charles | 8,289 |
| 23 | St. Mary | 7,782 |
| 24 | St. Martin | 7,617 |
| 25 | Pearl River | 7,521 |
| 26 | Washington | 7,069 |
| 27 | St. Bernard | 6,351 |
| 28 | Hancock | 6,311 |
| 29 | Avoyelles | 6,247 |
| 30 | Washington | 6,198 |
| 31 | Washington | 6,198 |
| 32 | Warren | 5,870 |
| 33 | St. John the Baptist | 5,816 |
| 34 | Iberville | 5,446 |
| 35 | Pike | 4,797 |
| 36 | Lincoln | 4,731 |
| 37 | East Feliciana | 4,250 |
| 38 | Leflore | 4,163 |
| 39 | West Baton Rouge | 4,130 |

| | | |
|----|-----------------|-------|
| 40 | Scott | 4,086 |
| 41 | Adams | 3,947 |
| 42 | George | 3,904 |
| 43 | Yazoo | 3,883 |
| 44 | Sunflower | 3,850 |
| 45 | Copiah | 3,831 |
| 46 | Simpson | 3,825 |
| 47 | Covington | 3,759 |
| 48 | Franklin | 3,714 |
| 49 | Marion | 3,646 |
| 50 | Leake | 3,596 |
| 51 | Plaquemines | 3,558 |
| 52 | Pointe Coupee | 3,522 |
| 53 | Assumption | 3,336 |
| 54 | Stone | 3,135 |
| 55 | St. James | 3,041 |
| 56 | Attala | 2,852 |
| 57 | Concordia | 2,792 |
| 58 | Holmes | 2,368 |
| 59 | Smith | 2,240 |
| 60 | Madison | 1,903 |
| 61 | Lawrence | 1,852 |
| 62 | Walthall | 1,826 |
| 63 | Perry | 1,723 |
| 64 | Amite | 1,716 |
| 65 | Catahoula | 1,567 |
| 66 | Jefferson Davis | 1,511 |
| 67 | Carroll | 1,468 |
| 68 | West Feliciana | 1,409 |
| 69 | East Carroll | 1,399 |
| 70 | St. Helena | 1,226 |
| 71 | Claiborne | 1,192 |
| 72 | Humphreys | 1,127 |
| 73 | Franklin | 1,029 |
| 74 | Wilkinson | 925 |
| 75 | Jefferson | 819 |
| 76 | Sharkey | 573 |
| 77 | Tensas | 434 |
| 78 | Issaquena | 184 |